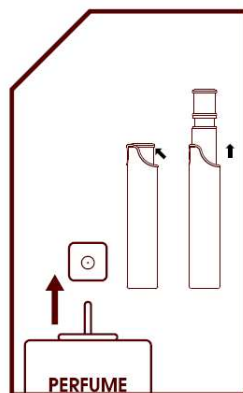
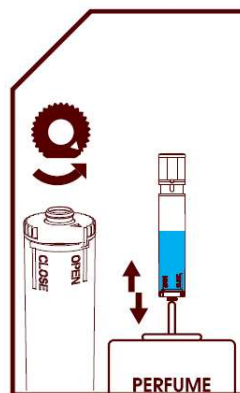


Caseti Easy In香水瓶使用方法

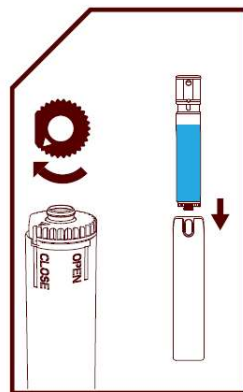
1. 首先把香水的蓋子打開
Remove the spray nozzle from your usual fragrance bottle.



2. 取出香水噴霧瓶內的內膽, 並把內膽底部的鎖扭至"OPEN"
Put out the tank in the atomizer and open the lack system of bottom.



3. 把香水噴霧瓶的底部對準香水的管子, 直接填充
Place the atomizer on the stem and pump to fill.



4. 完成填充後, 把內膽底部的鎖扭至"CLOSE", 對準噴口放入即可
Close the lock and put back to case properly.

